



asphalt

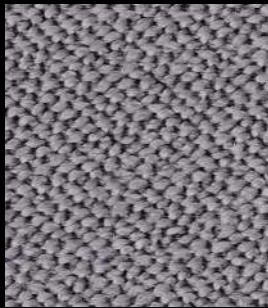
Arco

cat. Extra

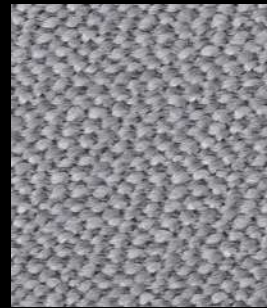
95% WV - 5% PA
Flame retardant - 70.000 Martindale



lanoso



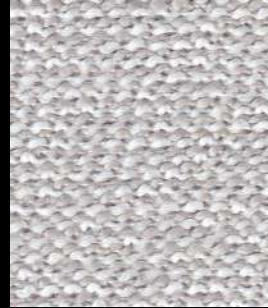
gravel



fels



snow



arctic



pepple



ebony



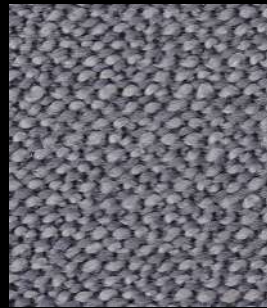
secret



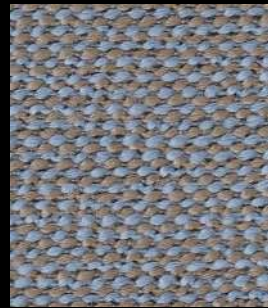
coffee



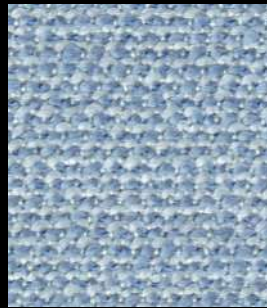
truffle



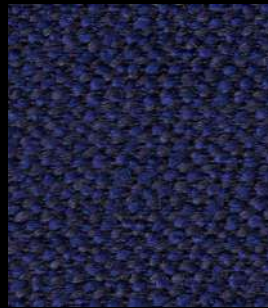
kies



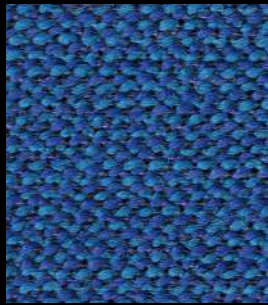
coast



breeze



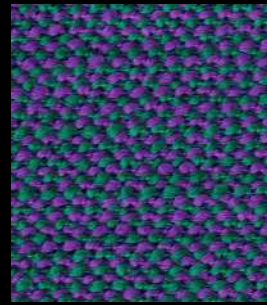
ink



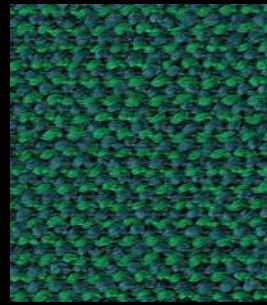
mare



cobalt



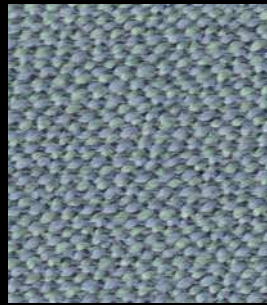
circus



garden



pond



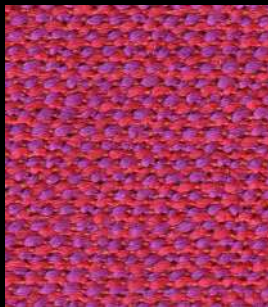
aqua



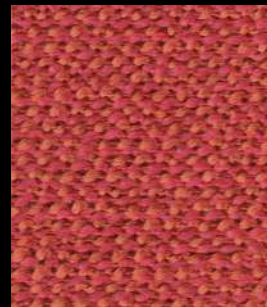
citron



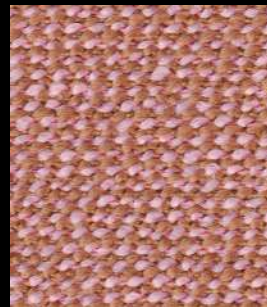
cherry



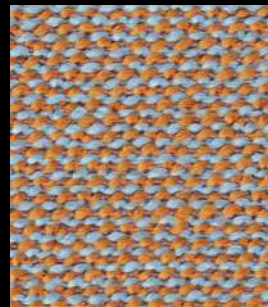
magenta



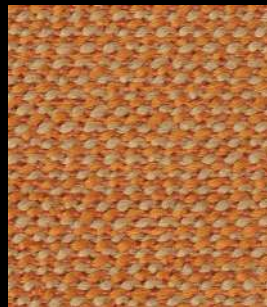
fire



blossom



jade



safran



corn

Technical details

Composition	95% WV - 5% PA
Weight	Gr./ml. 980
Abrasion test	Martindale - ISO 12947-2: 70.000 rubs
Lightfastness	ISO 105-B02: 5/8
Pilling	ISO 12945-2: 4/5
Flame retardant	FAR 25.853 (12 sec. vertical) CAL TB 117 - 2013 DIN 4102-1 B2 EN 13501-1 EN 1021 1/2 BS 5852:2006 (part1) BS 5852:2006 (part2) Crib5 IMO: 2014/90/EU Marine Equipment Directive NF D 60-013 (Art. AM 18)
Special finishes	Anti-shrink, anti-pilling, yarn dyed
Environment	NATURAL RENEVABLE MATERIAL